



FLOE[®]

SHIMMERING SPARKLES



COLORTEK[®]



600/00 - Iceberg Base White



600/103 - Paper Base IT34-2



600/106 - Reflets Base IT34-4



600/101 - Valanga Base IT40-1



600/104 - Mine Base IT147-2



600/107 - Powder Base IT34-5



600/102 Dalle Base IT40-2



600/105 - Warm Base IT34-5



620/108 + Additive 6 & 9 - Moon Base IT148-6



600/109 - Tin Base IT148-6



600/112 - Smoke Base IT148-6



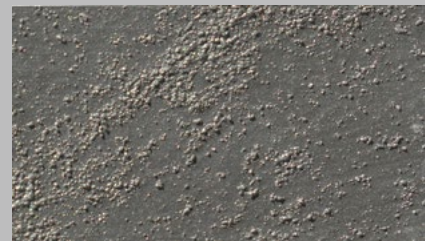
600/115 - Trout Base IT148-6



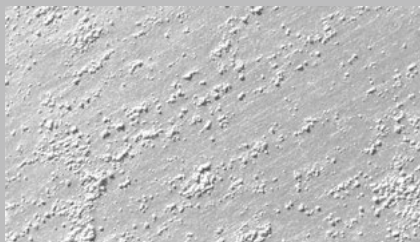
600/110 - Mink Base IT148-6



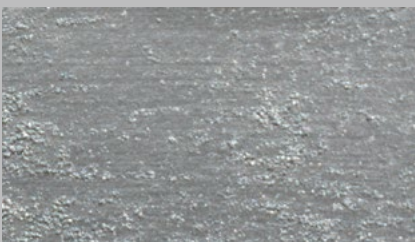
600/113 - Rhino Base IT148-6



600/116 - Iron Base IT148-6



600/111 - Fossil Base IT148-6



600/114 - Shadow Base IT148-6



620/117 + Additive 9 - Spark Base R10



600/118 -Morse Base IT40-2



600/121 - Ritmo Base IT37-3



600/124 - Line Base IT35-2



600/119 -Crosta Base IT34-1



600/122 - Drops Base IT37-3



600/125 - Aurora Base IT33-2



600/120 -Silver Base IT34-1



600/123 - Ashes Base IT35-5



600/126 + Additive 9 -Linen Base IT33-2



600/127 - Sepia Base 200-4



600/130 - Cinnamon Base 200-4



600/133 - Espresso Base 200-4



600/128 - Ecru Base 200-4



600/131 - Umber Base 200-4



600/134 - Coffee Base 200-4



600/129 - Gravity Base 200-4



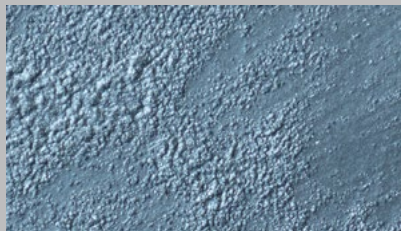
600/132 - Caramel Base 200-4



620/135 + Additive 9 - Night Base R96



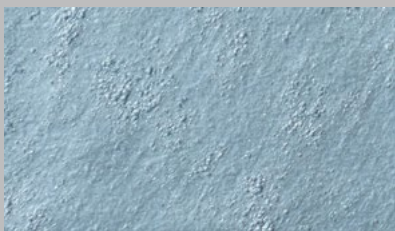
600/136 - Olympic Base 036-3



600/139 - Yale Base 036-3



600/142 - Denim Base 036-3



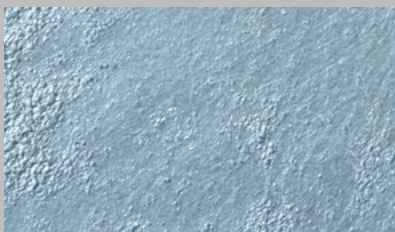
600/137 - Rain Base IT19-5



600/140 - Freeze Base IT74-5



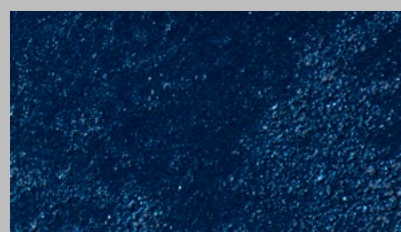
600/143 - Star Base IT74-4



600/138 - Bell Base IT19-4



600/141 - Sea Base IT74-5



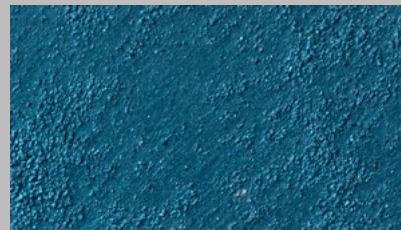
620/144 + Additive 6 - Blues Base R68



600/145 - Sapphire Base 036-3



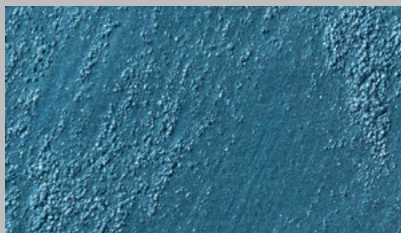
600/148 - Goute Base 036-3



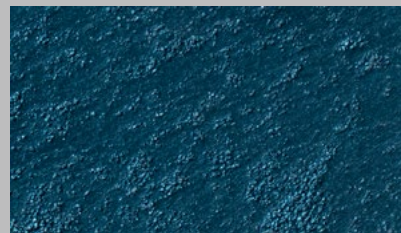
600/151 - Azure Base 036-3



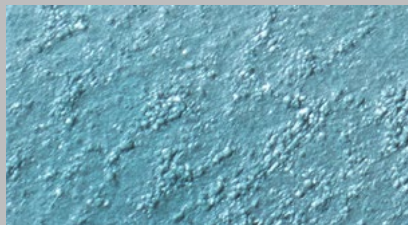
600/146 - Sky Base 036-3



600/149 - Space Base 036-3



600/152 - Navy Base 036-3



600/147 - Water Base IT20-3



600/150 - Sub Base IT11-6



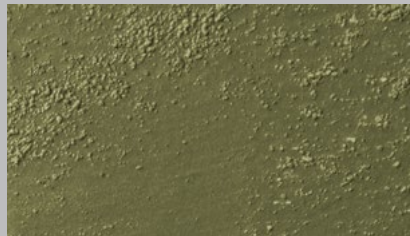
620/153 + Additive 8 - Tuffo Base R65



600/154 - Jade Base 151-2



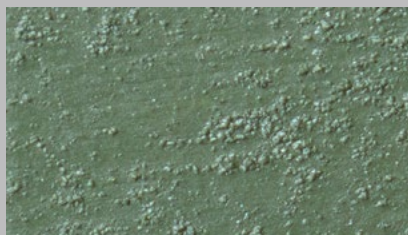
600/157 - Cedars Base 151-2



600/160 - Army Base 151-2



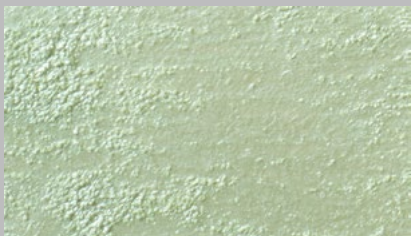
600/155 - Glassy Base IT141-1



600/158 - Forest Base 151-2



600/161 - Olive Base 151-2



600/156 - Bay Base IT1-2



630/159 - Pin Base R17



630/162 - Fuego Base R17



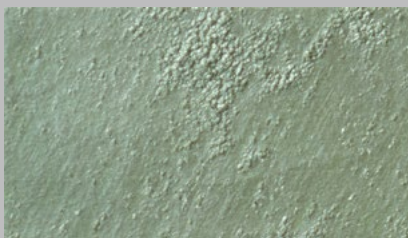
600/163 - Dust Base IT136-7



600/166 - Mint Base 151-2



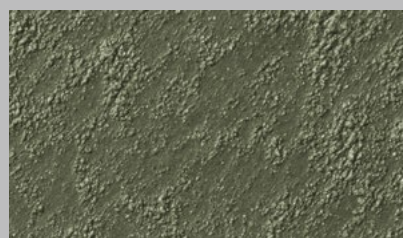
600/169 - Hunter Base 151-2



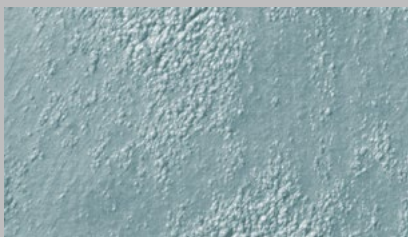
600/164 - Trueno Base IT136-1



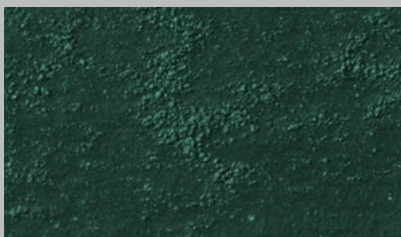
600/167 - Landscape Base 151-2



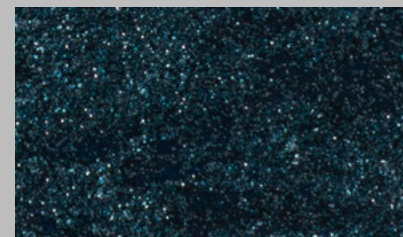
600/170 - lode Base 151-2



600/165 - Ice Base IT113-7



600/168 - Jewel Base R27



620/171 + Additive 9 - Aqua Base R65





600/172 - Blush Base IT79-2



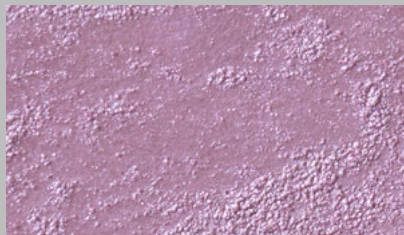
600/175 - Fresh Base IT79-2



600/178 - Candy Base IT79-2



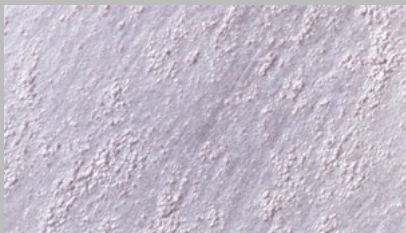
600/173 - Makeup Base IT79-2



600/176 - Taffy Base IT79-2



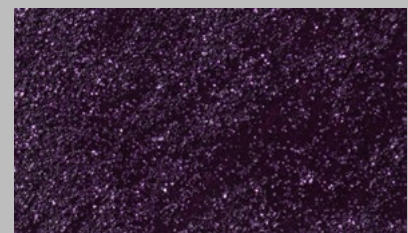
600/179 - Rubby Base IT79-2



600/174 - Ultra Base IT79-2



600/177 - Punch Base IT79-2



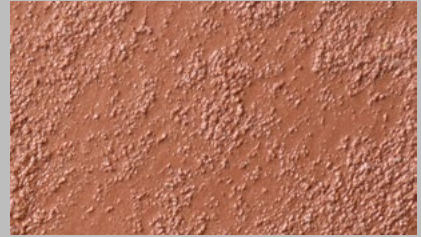
620/180 + Additive 9 - Wish Base R66



600/181 - Desire Base 179-4



600/184 - Mist Base 179-4



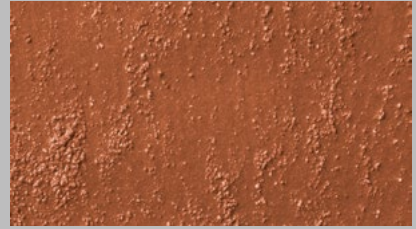
600/187 - Sangria Base 179-4



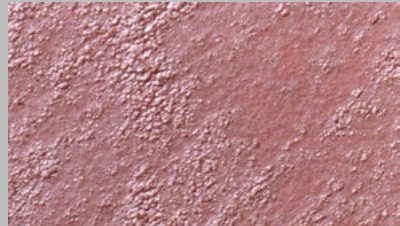
600/182 - Blossom Base 179-4



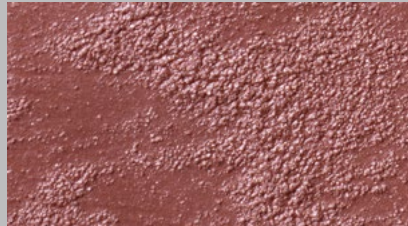
600/185 - Magma Base 179-4



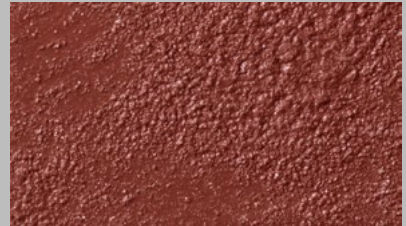
600/188 - Redwood Base 179-4



600/183 - Soft Base 179-4



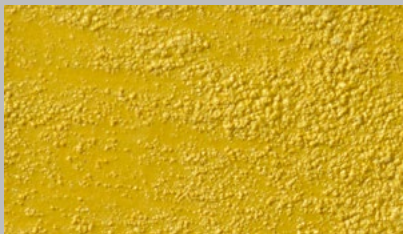
600/186 - Lava Base 179-4



600/189 + Additive 9 - Chili Base 179-4



600/190 - Candle Base 094-5



600/193 - Desert Base 094-5



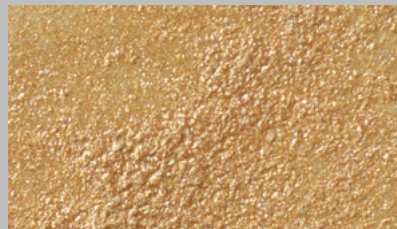
630/00 - Melt Base R17



600/191 - Wings Base 100-4



600/194 - Clay Base 100-4



620/00 + Additive 8 - Lamar Base White



600/192 - Tango Base 100-4



620/00 + Metallo Bronze -Sunshine Base R46



620/195 + 2x(Additive 7) - Ever Base R17





620/00 + Additive 6 - Silverlining
620/108 + Additive 6 & 9 - Moon Base White

Linen Effect

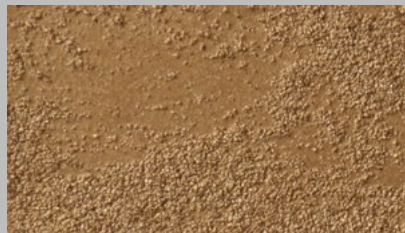


620/00 + Additive 6 - Silverlining Base White

Dragged Effect



610/00 - Aurelia Base R17



610/198 - Flowing Base R17



610/201 - Land Base R17



610/196 - Sand Base R17



610/199 - Molten Base R17



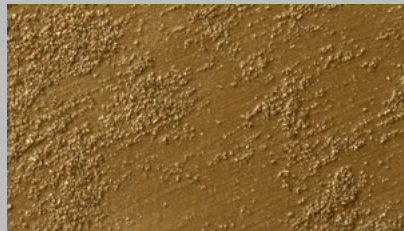
610/202 - Volcano Base R17



610/197 - Dijon Base R17



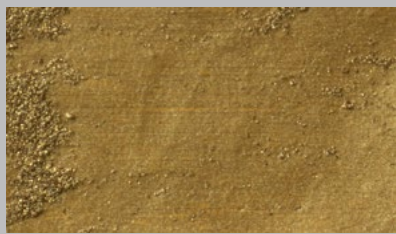
640/200 - Liquid Base R17



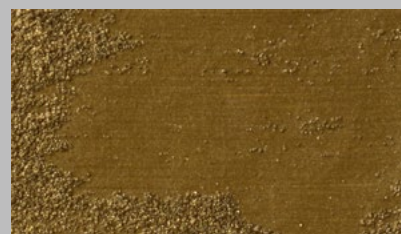
610/203 - Rock Base R17



610/204 - Nature Base R17



640/207 - Cave Base R17



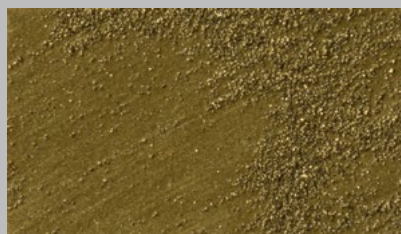
640/209 - Soil Base R17



640/205 - Grass Base R17



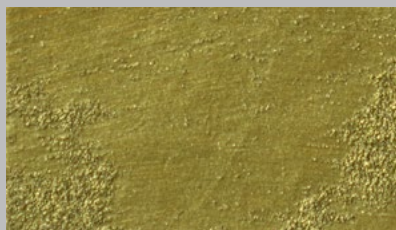
640/00 - Hema Base R17



640/210 - Pepper Base R17



610/206 - Roots Base R17



640/208 - Earth Base R17



640/211 - Tree Base R17



670/00 - Kin Base White



650/212 - Oxygen Base 136-3



650/213 - Fondant Base 200-4



650/214 - Merlot Base 126-6



650/215 - Think Pink Base 189-3



660/00 - Vino Base R94



680/00 - Frost Base White



680/216 - Hue Base 126-5



680/217 - Poetic Base R65



680/218 - Network Base IT142-3



680/219 - Drift Base IT142-3



680/220 - Deep Base 143-5

ENG Floe®

Floe® is a textured paint effect with a crystalline finish that will transform your home in a reflection of large and unexplored spaces by recreating through its warm and shimmering colors the atmosphere of the sandy deserts or the frosty and luminescent icy expanses of the Antarctic.

Technical Name

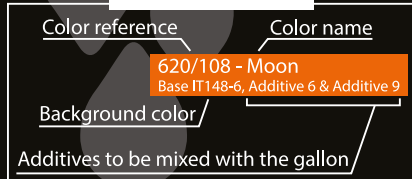
Textured metallic finish incorporating sparkles.



Key Properties

- Unleaded
- Water based
- Washable (after full curing)
- Non-flammable
- Odorless
- 9 attractive base colors (600, 610, 620, 630, 640, 650, 660, 670 or 680) and 5 additives (G6, G7, G8, G9, Metallo Bronze)
- Very low VOC content in compliance with:
 - EU directive 2010/79/EU
 - French decree No: 2011-321

CODING SYSTEM



Pack Size

- 1 US Quart - (1 kg)
- 1 US Gallon - (2.5 kg)
- Additive 0.6 kg and/or Metallo 0.85 kg (for 1 Gallon)
- Additive 0.24 kg (for 1 Quart)

Recommended Uses

Internal applications.



Type of Substrate

Plaster, embossed wall coverings, gypsum board, concrete, cement rendering, brick work.

Finish

A sandy effect with illuminating sparkles.

Coverage

7m²/kg/coat. Requires 1 coat for 600-620-630.
11m²/kg/coat. Requires 2 coat for 680.
4m²/kg/coat. Requires 1 coat for 610-640-650-660-670.

Drying Time

15 minutes to 1 hour depending on temperature and humidity.

Thinner

No thinning required.

Preparation

All surfaces to be painted should be clean, dry and free from loose and flaking material. Rub down and rinse. Prime the substrate with the appropriate COLORTEK® CO.ACRYL or C1A base (10 colors available: White, R10, R17, R27, R46, R65, R66, R68, R94 & R96).

Instructions

The shade is obtained by mixing one of the additives with the required Floe® base. Stir well - Spread Floe® in small quantities using alternative brush strokes in all directions; shift the sparkle particles to achieve the desired final effect.

A second coat could be applied and will result in a richer final effect.

Do not apply at temperatures below 5°C or when rain is expected.

Recommendation

To obtain the optimum Floe® finish and bring out the special sparkly crystals in this product, proper lighting should be directed to the designated walls.

Cleaning

Remove as much product as possible from application equipment before cleaning. Clean equipment immediately after use with warm soapy water and rinse thoroughly.

Do not empty product into drains or watercourses.

Additional Info

Product batches are tested using a quality control system and are ISO 9001:2008 certified.

Transportation & Storage

Care should be taken to avoid spillage. Protect from frost and humidity.



Floë® est une peinture à effets texturés de finition cristalline proposée dans une gamme de teintes chatoyantes et de couleurs fraîches qui fera vibrer en votre intérieur les grands espaces intacts et inexplorés en recréant sur vos murs l'ambiance chaude du sable fin des déserts, ou l'éclat et lumière des étendues enneigées de l'antarctique.

Nom Technique
Finition métallisé et brillante.

Propriétés

- Ne contient pas de plomb
- Produit en base eau
- Lavable
- Inodore
- 9 bases (600, 610, 620, 630, 640, 650, 660, 670 ou 680) et 5 additifs (G6, G7, G8, G9, Metallo Bronze)
- Faible teneur en COV conformément aux:
 - Directive EU directive 2010/79/EU
 - Decret Français No: 2011-321

Emballage

- 1 US Quart – (1 kg)
- 1 US Gallon – (2.5 kg)
- Additif 0.6 kg et/ou Metallo 0.85 kg (pour 1 Gallon)
- Additif 0.24 kg (pour 1 Quart)

Usage Recommandé

Application en intérieur.

Finition

Texturée à effet givré.



Types de Support

Enduit, ciment, plaque de plâtre, anciennes peintures usuelles absorbantes, etc.

Rendement

7m²/kg/couche. 1 couche pour 600-620-630.
11m²/kg/couche. 2 couches pour 680.
4m²/kg/couche. 1 couche pour 610-640-650-660-670.

Temps de Séchage

Environ 15 à 60 minutes en fonction des conditions climatiques et de la température ambiante.

Diluant

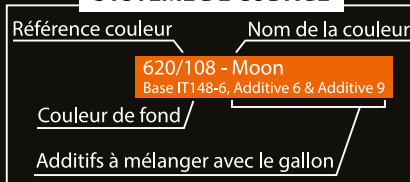
Aucune dilution requise.

Préparation du Support

Le support doit être dur, propre, sain, sec, cohésif et libre de toute matière telle que salpêtre, mousse, lichen ou autres microorganismes pouvant empêcher l'adhérence du produit sur le support. Dans un premier temps, appliquer la couleur appropriée de la sous-couche COLORTEK® CO.ACRYL ou C1A disponible en 10 teintes (White, R10, R17, R27, R46, R65, R66, R68, R94 & R96).



SYSTÈME DE CODAGE



Application

Sélectionner l'effet désiré en mélangeant la base appropriée avec l'un des additifs disponibles. Bien mélanger - Appliquer Floë® à l'aide d'un spalter en effectuant des mouvements croisés de balayage en prenant soin d'alterner les mouvements afin d'obtenir une finition naturelle non régulière. Pour un effet plus riche, appliquer une seconde couche une fois la première ayant proprement séchée.

Ne pas appliquer à une température ambiante inférieure à 5°C ou par temps pluvieux.

Recommandation

Il est recommandé d'installer de l'éclairage approprié afin de mettre en valeur les cristaux et l'effet précieux de Floë®.

Nettoyage des Outils

Éliminer autant que possible le reste du produit de la surface des outils. Nettoyer ces derniers en les frottant vigoureusement avec de l'eau et du savon.

Ne pas vider les restes du produit dans égouts ou les voies d'eau.

Information Additionnelle

Le processus de fabrication de Floë® est soumis au plus stricts contrôles de qualité certifiés conformes au standard ISO 9001: 2008.

Transport et Stockage

Stocker le produit à l'abri de l'humidité et des températures de gel.



COLORTEK[®]

Product designed in the EU



www.colortek.eu
info@colortek.eu



**Synergy, Added Value, Continuous Improvement,
Diversity, Integrity, Social Responsibility.**