

Voyage

Colortek's vintage textures

CRIC. 105



COLORTEK®



593



B/F Magnolia - 1101



B/F Ochre - 1103



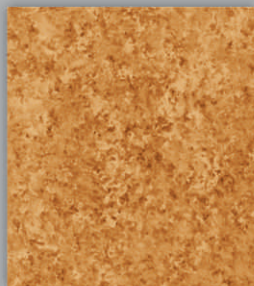
B/F Butter Scotch - 1105



B/F Henna - 1107



B/F Alloy - 1111



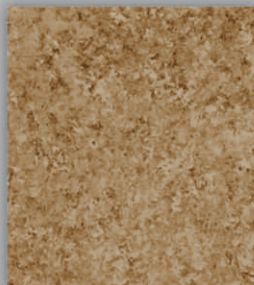
B/F Brick - 1113



B/F Gold Beating - 1116



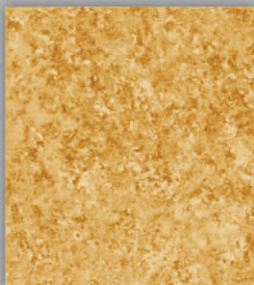
B/F Terracotta - 1119



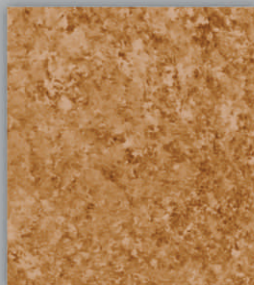
B/F Bister - 1121



B/F Mahogany - 1124



B/F Oxidation - 1126



B/F Sepia - 1128

GLAZE

Water or Oil Based glaze will add depth and beauty to any room. It is a simple application of a transparent coating over a painted wall. It can be applied using various tools and techniques to achieve a variety of stylized looks. In this guide, the basic decorative paint finish methods and techniques using sponges, spatulas, rags and brushes are shown. By following the simple step-by-step instructions outlined in this brochure, you'll be able to achieve an exceptional decorative finish that only looks professional.



Sponging On

This popular technique is easy to master and creates a defined pattern that looks great on large areas. Use a dampened sea sponge to apply the glaze mixture.

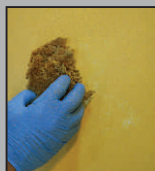


Ensure a random pattern by rotating the sponge while gently blotting the surface. If using a second glaze color, allow first coat to dry and then repeat the application steps.

Sponging Off

This subtractive technique produces an unusual style compared to sponging on. Apply the glaze with a fully loaded roller working in about 1m x 1m areas. Follow with a dampened sponge and gently blot the area

rotating and moving the sponge to avoid a repetitive pattern. Keep a wet edge and blend from one area to the next, avoiding leaving hard lines.



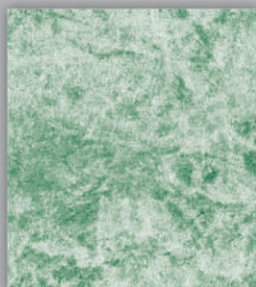
APPLICATION TIPS

We recommend to use Classic Colour when slower drying time is required for Water Based Glaze. Mix ratio, start by 1:1 and add more Classic Colour as needed up to 6:1



Rag

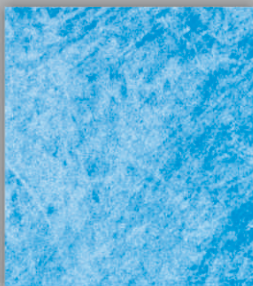
B/F Cornsilk - 1130



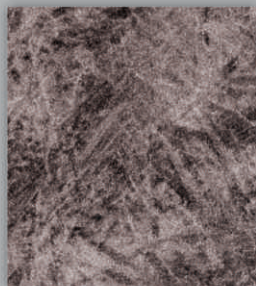
B/F Lush - 1134



B/F Lime Green - 1136



B/F Ultramarine - 1138



B/F Mulberry - 1140



B/F Fashion Blush - 1143



B/F Hot Pink - 1145



B/F Zesty - 1147



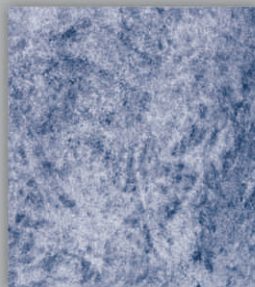
B/F Butterbur - 1149



B/F Pale Goldenrod - 1152



B/F Gunmettal - 1155



B/F Midnight Blue - 1158

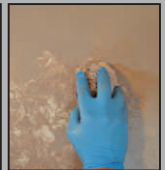
Ragging On

By using a 100% cotton cheesecloth or a rag, this technique will create a different pattern than either sponge type applications. After the surface is prepared and the glaze color has been tested, use a dampened cheesecloth or rag to apply the glaze mixture. The glaze should not run or drip when applied to the surface. The glaze can be applied in an even or random pattern to achieve the desired effect. In order to ensure an even result, load cheesecloth or rag with the same amount of glaze each time. Create a random pattern by consistently rotating the rag while gently blotting the surface. Complete a small area at a time, stand back and examine. Gently blot additional glaze to break up any lines or repetitive patterns.



Ragging Off

This technique produces yet another random pattern different from ragging on. One person can create this style although having a helper is suggested if applying to a large area. Apply the glaze with a fully loaded roller working in 1m x 1m areas. Follow with a dampened cheesecloth or rag and gently blot the area rotating and moving the rag to avoid a repetitive pattern. Keep a wet edge and blend from one area to the next, avoiding leaving hard lines. The more glaze removed, the more base coat color will show through. If using a second color, allow first glaze coat to dry and then repeat the application steps.





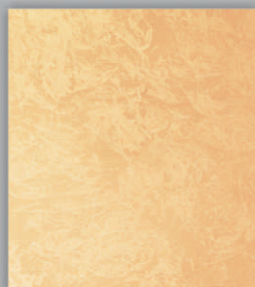
908-SB



B/F Buff - 1161



B/F Primrose - 1163



B/F Sienna - 1166



B/F Coronet - 1172



B/F Saddle Brown - 1175



B/F Rosy Boost - 1177



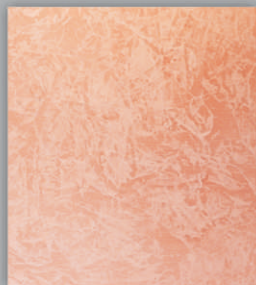
B/F Grizzly - 1182



B/F Fire Brick - 1184



B/F Tiara - 1186



B/F Flamigos - 1195



B/F Star Tone - 1197



B/F Blush Wine - 1198

Dragging

This technique produces an antiqued and distressed style perfect for doors, trim, molding and furniture. Achieve this look by applying glaze with a nylon/polyester brush. Follow with a dry brush, dragging and dabbing... working the glaze into the detail areas. Move the glaze around as it dries... keep brushing in desired direction, leaving more or less glaze to achieve the desired look.



Colorwashing

This simple technique produces a subtle, rustic style and simulates a time worn, faded look. The closer the colors are, the more subtle the look. Begin by applying the base coat in your chosen color. Allow to dry. Use a nylon/ polyester brush to apply a contrasting glaze color. Alter stroke patterns to achieve a "washed" look. This technique can also be done using a rag instead of the brush. For this technique, simulate wiping or washing the wall to achieve the desired pattern. This random process will create patterns which allow brush strokes and ragging marks to show through the glaze coat.

GLAZE WATERBORNE

Water based effect +/- 15 min open drying time, available in 1 US Quart & 1 US Gallon

SCUMBLE

Water based product that gives the same open time of the Oil Glaze, available in 1 L

CLASSIC COLOUR

Extender used to control drying time of Waterborne Glaze and Scumble, available in 1 L

XX ADDITIVE

Thickening and sag resistance to water based paints, available in 0.045 kg packs

GLAZE OIL-BASED

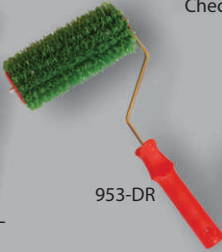
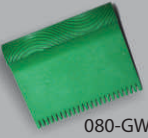
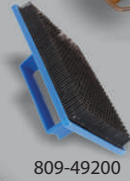
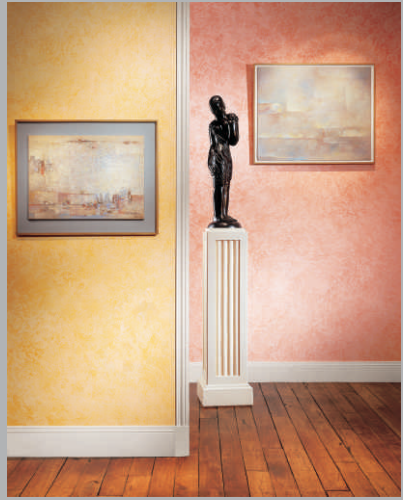
Oil based effect +/- 60 min open drying time, available in 1 US Quart & 1 US Gallon

PRODUCT TIPS



Other Techniques

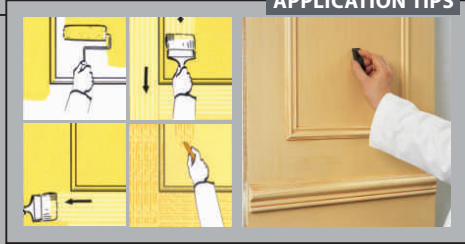
It is very important to remember that the finished look you are trying to achieve depends on several different factors. The color and look can vary greatly depending on the color combination you select, as well as the technique used. Different tools will create different looks, we showcase below some tools available in our COLORTEK® stores.



MADEIRA®

An imitation of antique painted wood weathered by time, it could be applied to all interior supports. Applied with a roller and is smoothed with a graining brush to recreate the fine lines reminiscent of wood veins (available in a wide variety of tones and colors). A special wax marker (brown, gold or silver) is used to give the impression of aged wood with a modern twist. To protect the final result, the use of Varnish 4005 flat, satin or gloss is recommended.

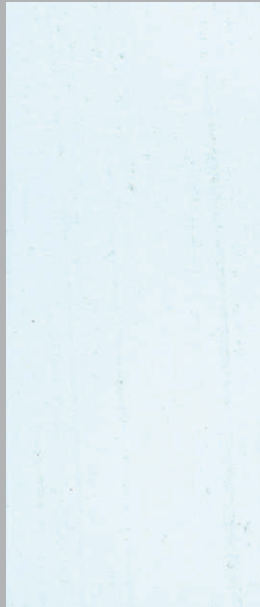
APPLICATION TIPS



830-43100



Madeira: 102
Wax Brown



Madeira: IT 32-2
Wax Silver



Madeira: IT 126-2
Wax Gold

CORIUM®

A paint with a subtle wrinkled texture underscored by the color with pearl reflection, Corium provides a warm presence in all interiors and hides wall defects. A wide variety of metallic colors and hues are available (refer to COLORTEK® 160 catalogue). After posing the silk paper that wrinkles when pasted, its base coat is applied. Use a flat brush in two coats to achieve the required colored leather finish. For an aged leather effect we recommend the use of COLORTEK® Dark Highlighter Coloriser.

APPLICATION TIPS

152/2



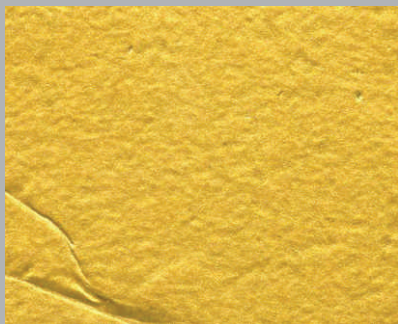
To protect the final result, the use of Oxibond® 4005 is recommended.



Corium Metallic - 70/00 (NT + 8 / kg)
Protection Coat: Oxibond® 4005F



Corium Metallic - 70/00 (NT + 8 / kg)
+ Dark Highlighter
Protection Coat: Oxibond® 4005F



Base C1A R17
Corium Rich Gold - 75/00
Protection Coat: Oxibond® 4005F



Base C1A R17
Corium Rich Gold - 75/00 + Dark Highlighter
Protection Coat: Oxibond® 4005F

CRACKLE

Mimicking the cracks which appears on the surfaces of old aged pictures, furniture, walls etc... Crackle is a water base system that can be applied with a roller or brush and is available in a wide variety of colors.



RL Glove



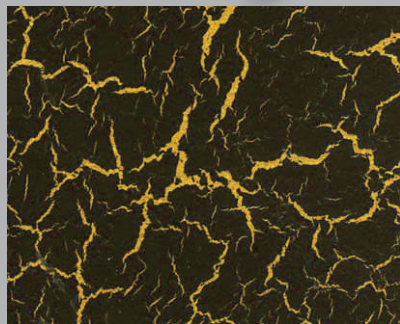
419/2



329/15



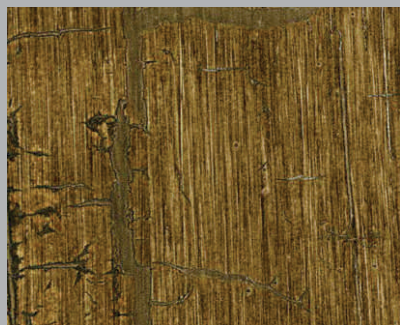
50 ml
Highlighter



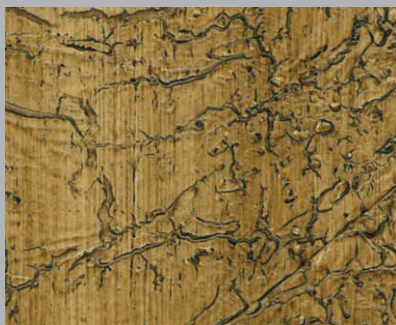
Golden Crack - 184 [Base Coat Metallo® Gold
Second Coat Crackle Glaze
Third Coat C1AR96

Designed to produce consistent cracking of emulsion paint. This acrylic medium creates dramatic 2 color aged effects. The Crackle glaze is applied over an emulsion base coat which will be the color of the cracks. An emulsion top coat in the chosen second color is then applied over the glaze. The top coat cracks to reveal the base coat.

You can also use a 2 part (Crackle Glaze and Crackle Part Two) clear crack system, this varnish faithfully reproduces the regular crazed pattern associated with old porcelain glazes. The crack effect can be accentuated with a crack highlighter available in white or dark brown for a truly aged finish.



Lace Wood - 181 [Base Coat Co-Acryl Pure White
Second Coat Crackle Glaze
Third Coat Crackle Part Two
Fourth Coat Dark Highlighter



Sugar Pine - 189 [Base Coat Fondo F
Second Coat Toile Tissée
Third Coat Crackle Glaze
Fourth Coat Crackle Part Two
Fifth Coat Dark Highlighter

SCUMBLE

Wood Effect

The COLORTEK® nature wood kit creates an instant wood grain finish on any surface. This water based system is easy to use, can be used on interior or exterior surfaces and is low odor. Beautiful results can be achieved on fiberglass, steel, plastic, wood, cement plaster, previously painted surfaces etc.

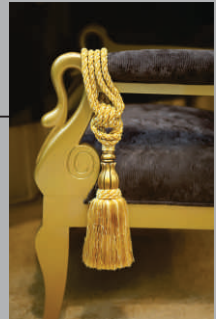


Check the Scumble catalogue for full color assortment

METALLO®

Precious Metals

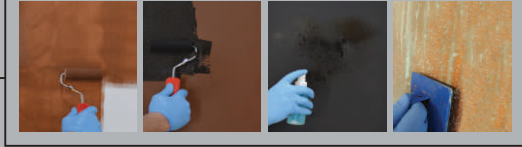
Precious metals have been used for centuries as jewels and charms, and have acquired rich symbolic associations. Metallo® by COLORTEK® helps you achieve a metallic decorative and durable finish that radiates designer quality in 50 rich, opulent colors while giving you plentiful means to mix, match and create.



Check the Metallo® catalogue for full color assortment

OXYD®

COLORTEK® Oxyd® (Copper, Bronze and Iron) is a water base, modified acrylic paint with a high concentration of real metallic particles. It will tarnish naturally over time if exposed to the proper elements, however Oxyd® Aging Solution will speed up the oxidation process and create a beautiful, authentic finish in minutes. The entire system can be applied to any properly prepared surface, including metal, wood, plaster etc...



Oxyd® Bronze



Bronze Metallic - 621

Step 1: Apply two coats of Oxyd® Primer using a brush, roller or spray. Stir well before use.

Step 2: Apply first coat of Oxyd® Bronze Paint and allow to dry.

Step 3: Apply second coat of Oxyd® Bronze Paint in the same manner. The Blue Patina Aging Solution should be applied while this coat is still wet (within 5 minutes). Directly after use a special COLORTEK® tool 809-49200 to achieve the dragging effect. When finished reapply the Blue Patina Ageing Solution lightly where needed.

Step 4: Oxyd® Protection can be applied by brush, roller or spray. Surface must be completely dry prior to top coating. First coat: Add equal parts of Oxyd® Protection with water and stir well before applying. Second coat (If needed): Apply Oxyd® Protection without dilution. Let surface dry for 1 hour before handling. Full cure time is 7 to 10 days.

Oxyd® Copper

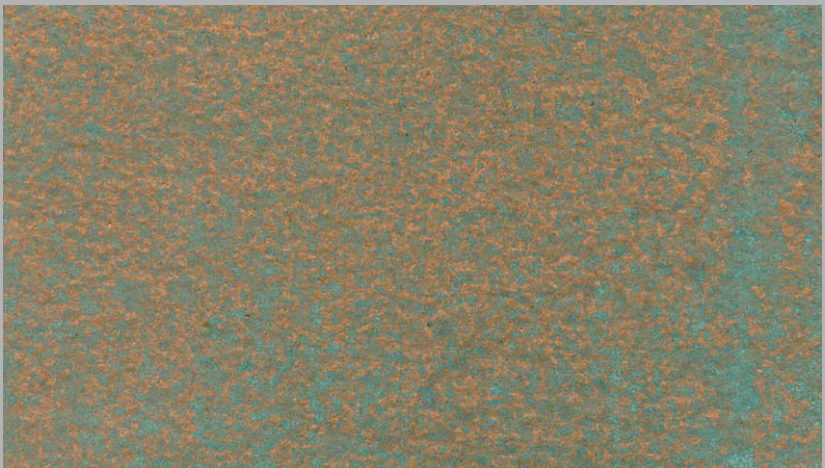
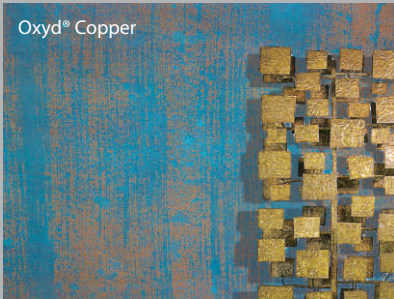
Step 1: Apply two coats of Oxyd® Primer using a brush, roller or spray. Stir well before use.

Step 2: Apply two coats of Oxyd® Copper Paint and allow to dry.

Step 3: Lightly spray the Green Patina Ageing Solution using a plastic pump sprayer. Directly after use a special COLORTEK® tool 809-49200 to achieve the dragging effect. After 5 minutes stipple the surface with the same tool.

Step 4: After 30 -60 minutes depending on weather conditions reapply the Green Patina Ageing Solution using a plastic pump sprayer.

Step 5: Oxyd® Protection can be applied by brush, roller or spray. Surface must be completely dry prior to top coating. First coat: Add equal parts of Oxyd® Protection with water and stir well before applying. Second coat (If needed): Apply Oxyd® Protection without dilution. Let surface dry for 1 hour before handling. Full cure time is 7 to 10days.



Oxyd® Iron



Iron Metallic - 641

Step 1: Apply two coats of Oxyd® Primer using a brush, roller or spray. Stir well before use.

Step 2: Apply two coats of Oxyd® Iron Paint allowing to dry between each coat and completely dry before applying Rust Activator.

Step 3: Apply the Rust Activator using a plastic pump sprayer.

Step 4: Allow 24 hours before applying lightly a second coat of Rust Activator where needed using a plastic pump sprayer.

Step 5: Oxyd® Protection can be applied by brush, roller or spray after approximately 2 hours. First coat: Add equal parts of Oxyd® Protection with water and stir well before applying. Second coat (If needed): Apply Oxyd® Protection without



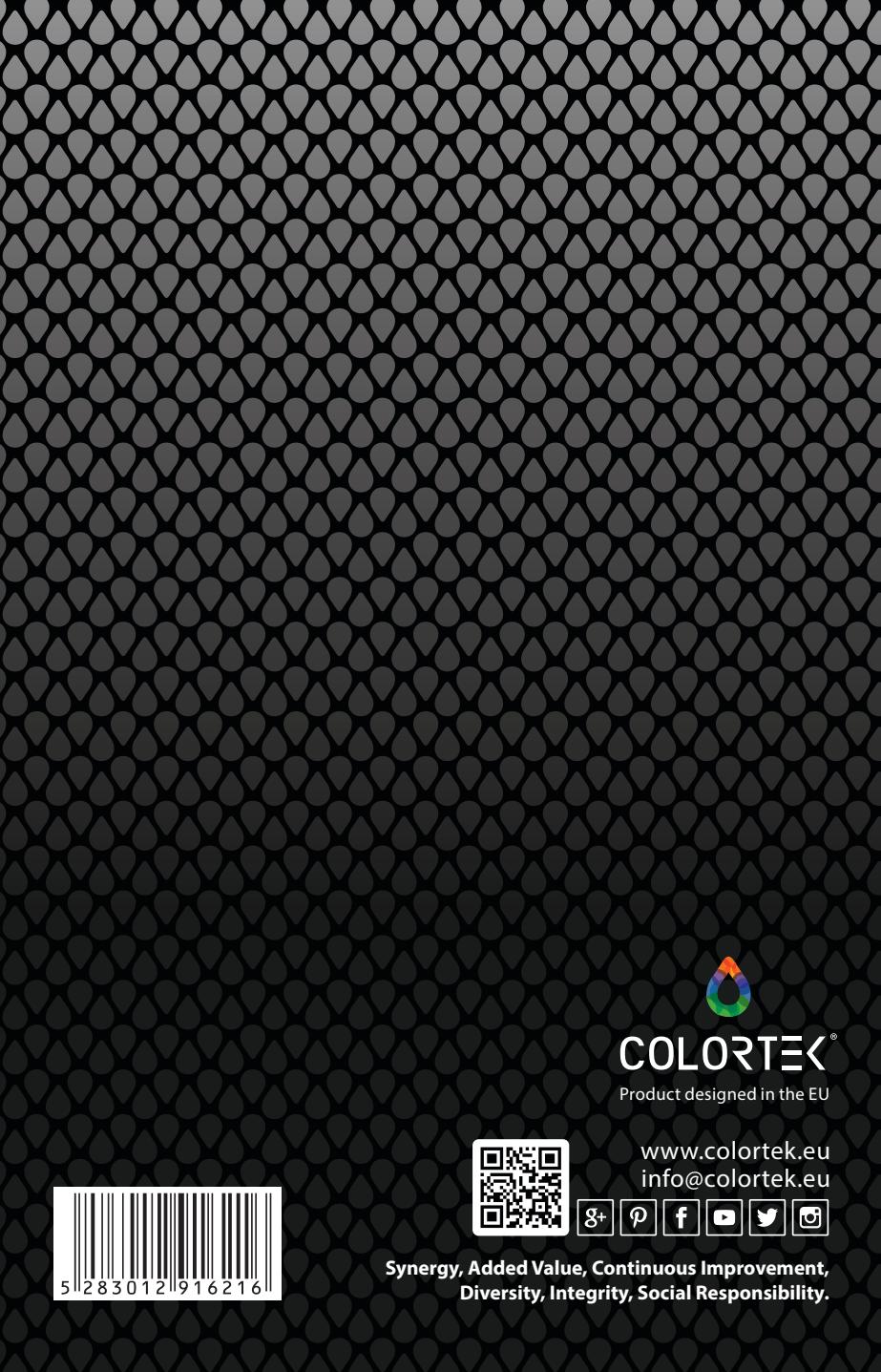
Applicable for:

- Glaze Water Based
- Corium



Certificate CH12/1128





COLORTEK®

Product designed in the EU



www.colortek.eu
info@colortek.eu



**Synergy, Added Value, Continuous Improvement,
Diversity, Integrity, Social Responsibility.**